

THE SIMONIC BUILDING PERIMETER PARK OFFICE CENTER

8750 PERIMETER PARK BLVD.
JACKSONVILLE, FL 32216



OFFICE FOR LEASE 2,500 RSF

- ◆ \$16.00 Per/SF (Net Electric + Janitorial)
- ◆ Located in Perimeter Park off of Southside Blvd with easy access to JT Butler Blvd and I-95
- ◆ Immediate access to the I-95 and I-10 interchange
- ◆ Parking 4:1,000 SF
- ◆ Highly secure location with private entry
- ◆ Professional, personable and responsive property management on-site
- ◆ Zoning: IBP (Allows for medical, professional office uses)
- ◆ Floor plan to include: Lobby, reception, 7 perimeter offices, open area for stations, copy/production room and 2 common area restrooms.

AVAILABLE SPACES

Space	Lease Rate	Size (SF)
Suite 102	\$16.00/SF	2,500 SF

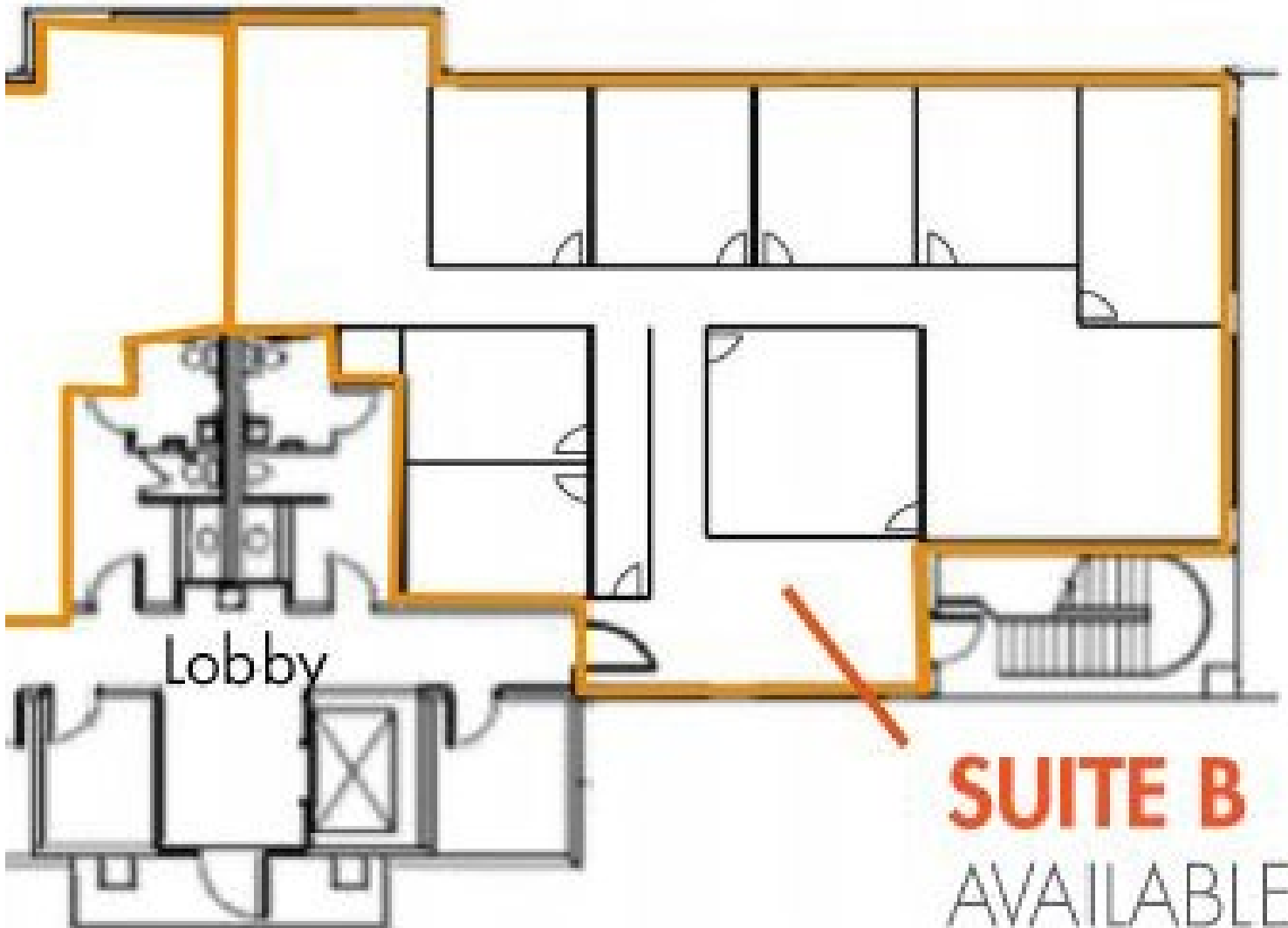


ALEX EVANS
OWNER/BROKER

📞 | 904.210.9878
✉ | alex@creprojax.com



EVANS COMMERCIAL
PROPERTIES, INC.



Lobby

Front Entrance

SUITE B
AVAILABLE
2,500 RSF

FLOOR PLAN TO INCLUDE: LOBBY, RECEPTION, 7 PERIMETER OFFICES, OPEN AREA FOR STATIONS, COPY/PRODUCTION ROOM AND 2 COMMON AREA RESTROOMS.