

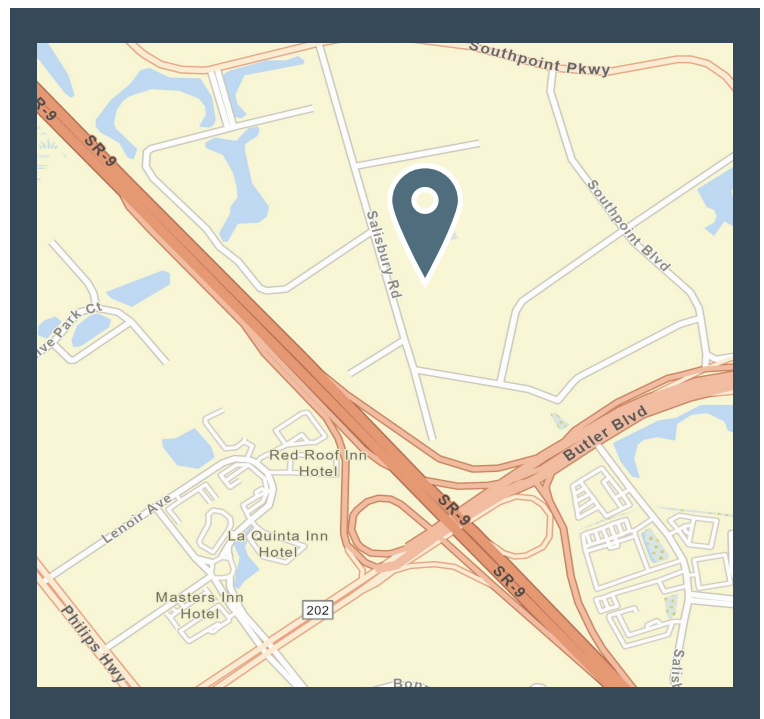
SALISBURY LAKES OFFICE BUILDING THREE - FOR LEASE

4237 SALISBURY ROAD, BLDG 3
JACKSONVILLE, FL 32216



PROPERTY HIGHLIGHTS

- ◆ \$13.00 - \$16.45 Per/SF - Modified Gross
- ◆ Located in Southpoint, minutes from the St. Johns Town Center and abundant local amenities.
- ◆ Immediate access to JTB/I-95 interchange.
- ◆ Abundant on-site parking.
- ◆ A quiet campus setting, beautifully landscaped with lakeside views.
- ◆ Private entries, bathrooms, breakrooms and more (See attached floorplans)



ALEX EVANS
OWNER/BROKER

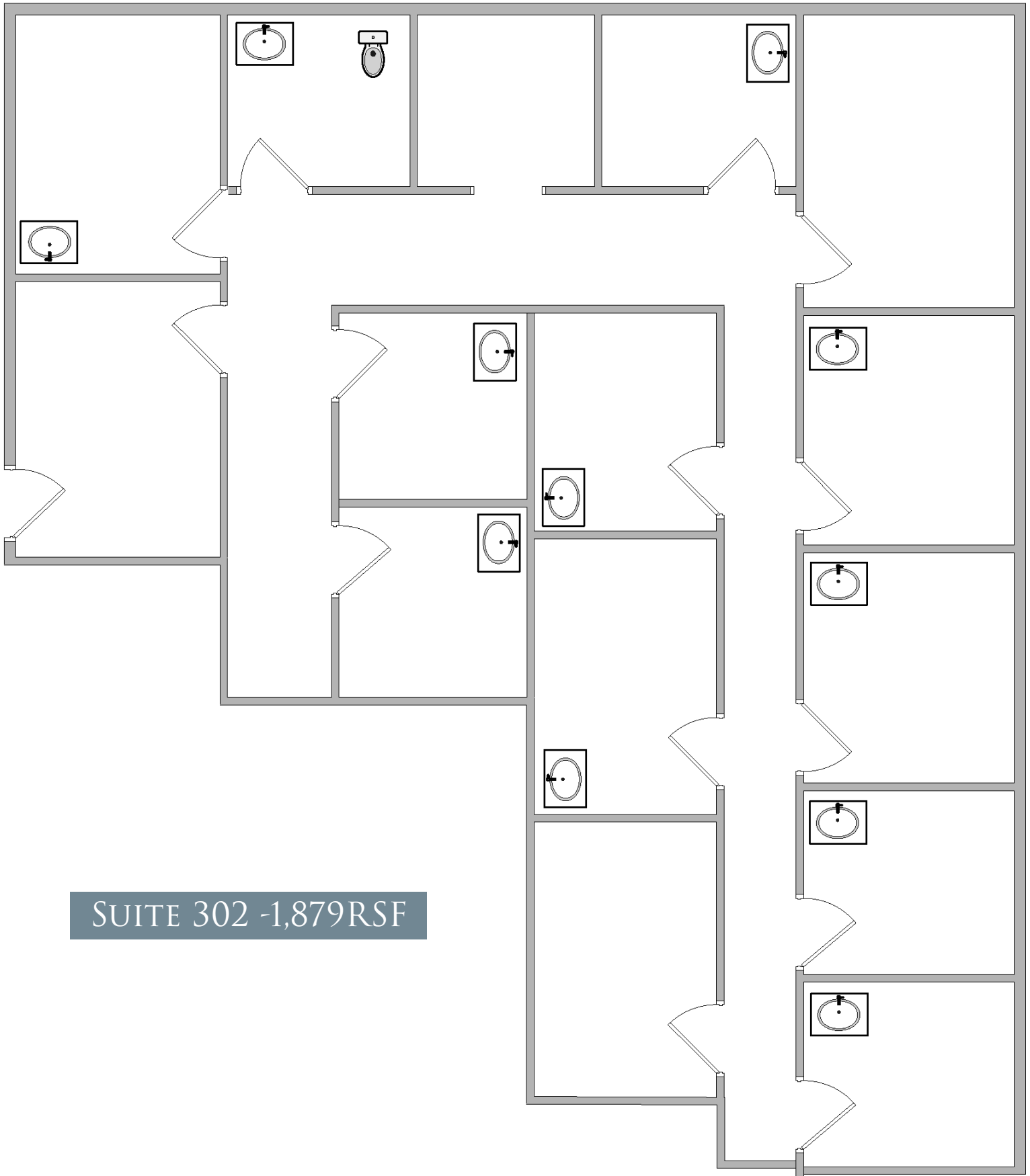
📞 | 904.210.9878
✉ | alex@creprojax.com



EVANS COMMERCIAL
PROPERTIES, INC.

FLOORPLANS

1ST FLOOR - SUITE 302 - 1,879 RSF



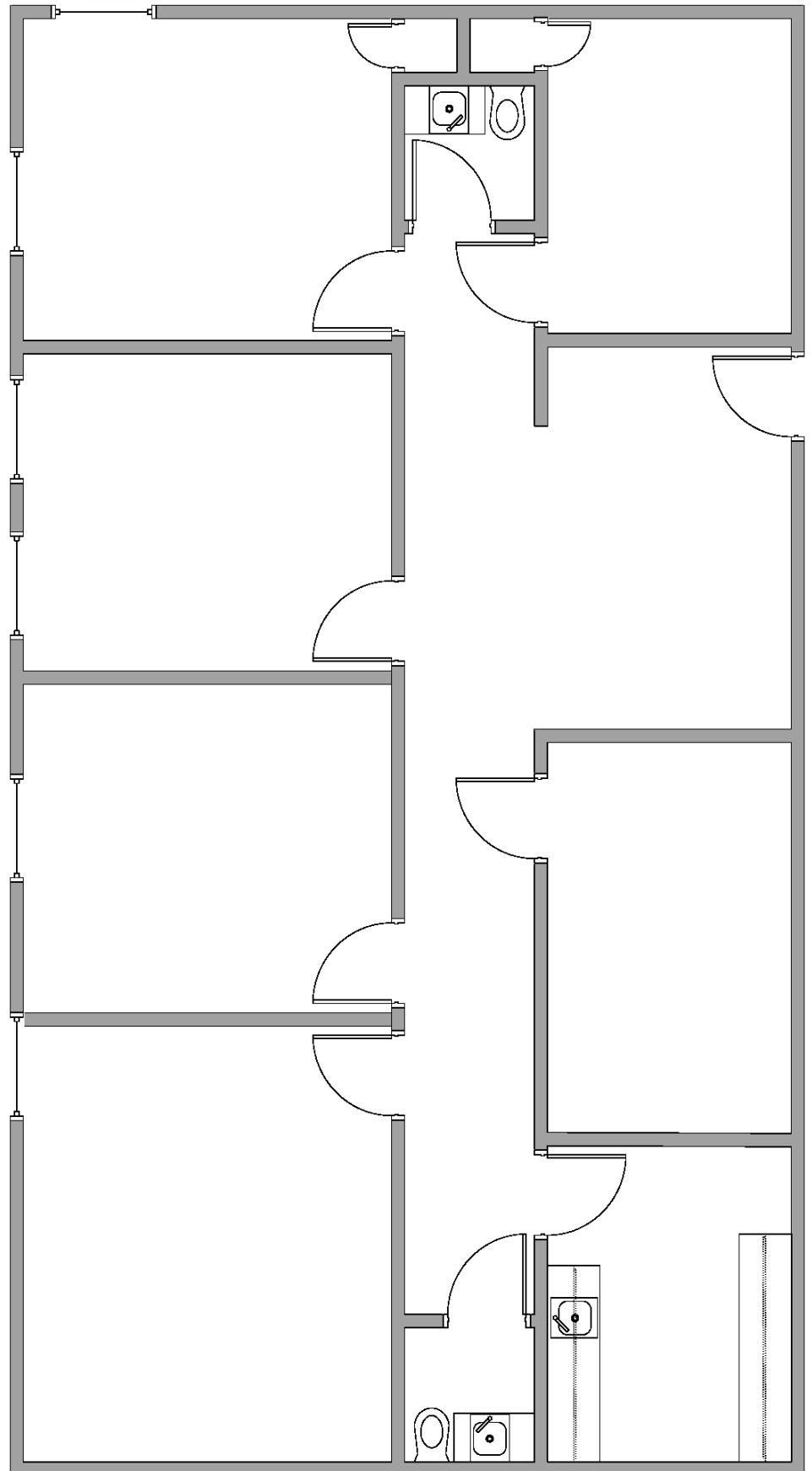
SUITE 302 -1,879RSF

ALEX EVANS
OWNER/BROKER

☎ | 904.210.9878
✉ | alex@creprojax.com



EVANS COMMERCIAL
PROPERTIES, INC.



SUITE 311 -1,782 RS

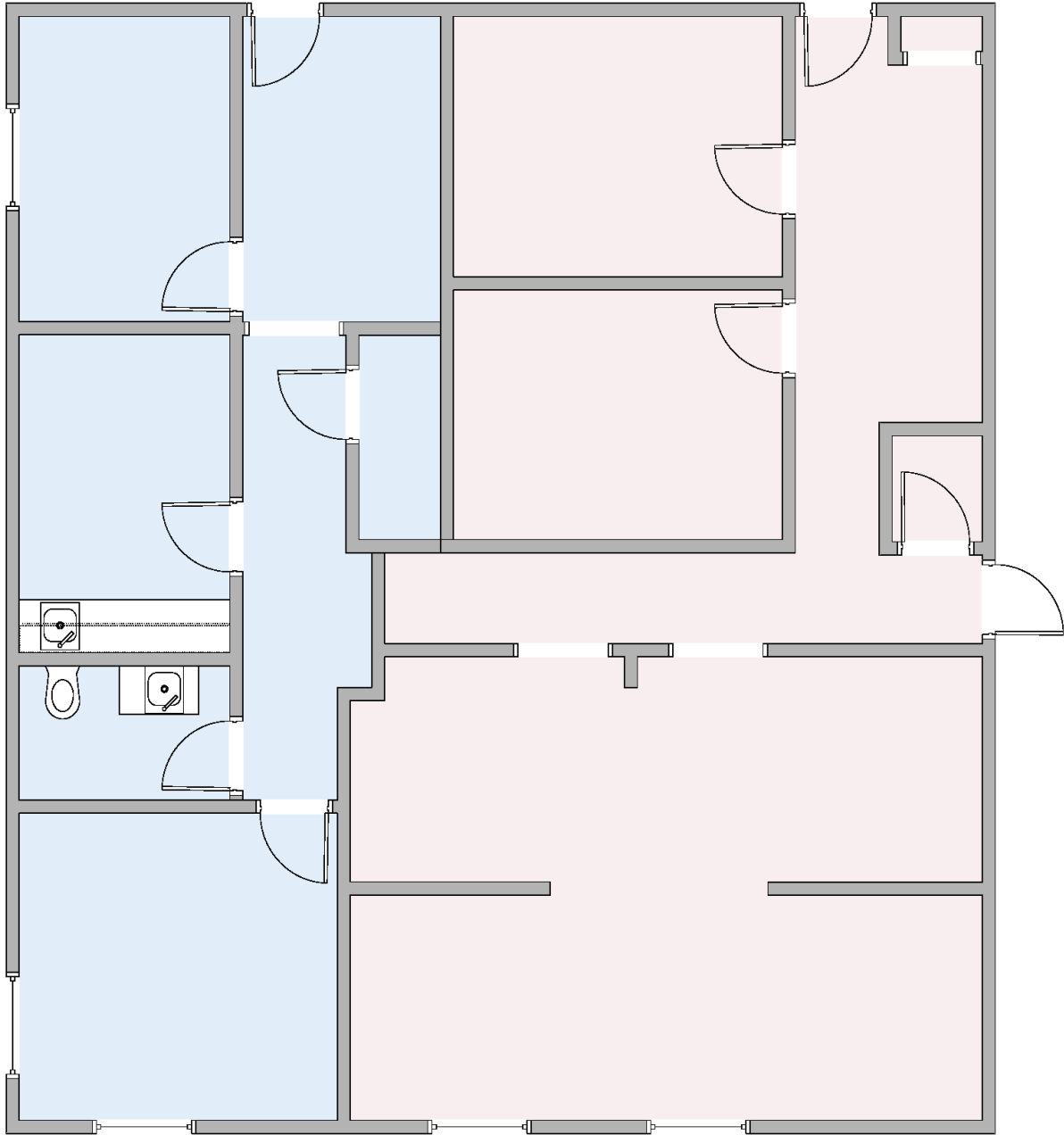
FLOORPLANS

2ND FLOOR - SUITE 330 & 340 - 1,782 RSF

SUITE 330 & 340 - 1,755 RSF

SUITE 330 - 693 RSF

SUITE 340 - 1,062 RSF



ALEX EVANS
OWNER/BROKER

☎ | 904.210.9878
✉ | alex@creprojax.com



EVANS COMMERCIAL
PROPERTIES, INC.

