

LEVY ROAD WAREHOUSE

151 LEVY ROAD, ATLANTIC BEACH, FL 32233

FOR LEASE
\$8.00 / SF + NNN \$1.70



- Available: Bay #2 - 1,180 SF
- Zoning: ALIW (Light Industrial)
- Electric: Three-Phase
- Ceiling Height: 13' Clear at eaves
- Loading: One (1) grade level loading door (10'w X 14'h); one (1) personnel door
- Space Details: Open warehouse, recently remodeled office (+/- 350 SF) and mezzanine area +/- 350 SF)
- Lighting: Metal Halide
- Utilities: City Water & Sewer
- Close to Mayport Naval Station

Alex Evans, Broker
Phone: (904) 210-9878
alex@creprojax.com



EVANS COMMERCIAL
PROPERTIES, INC.

10151 Deerwood Park Blvd • Jacksonville, FL 32256

Bldg. 200 Suite 250

Phone : (904) 210-9878 Fax: (888) 405-8106

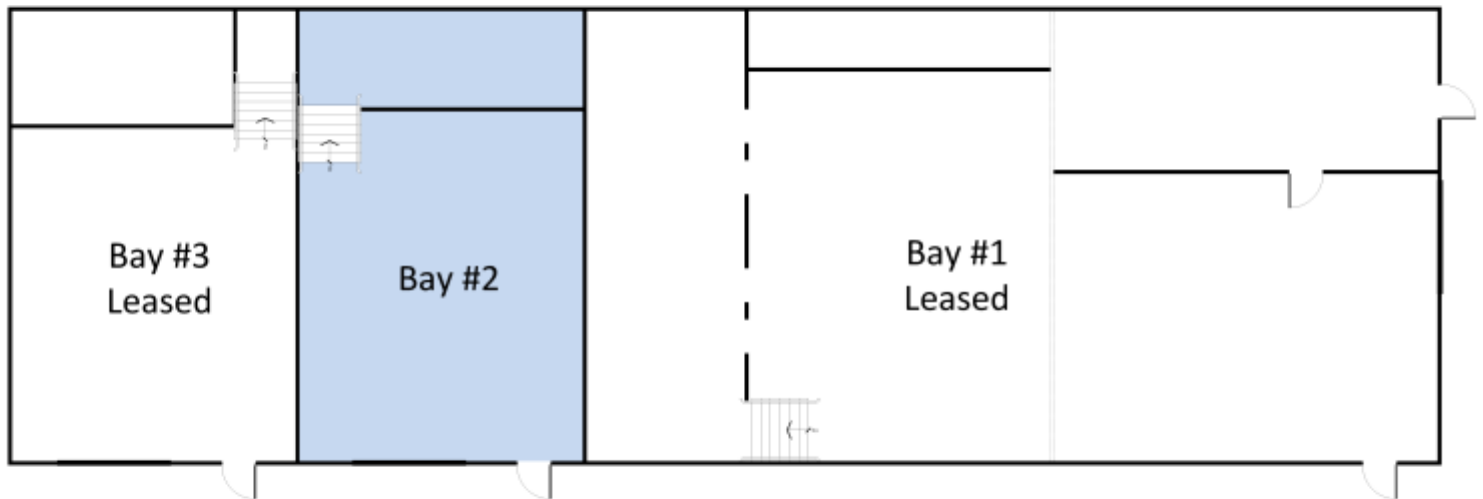
LEVY ROAD WAREHOUSE

151 LEVY ROAD, ATLANTIC BEACH, FL 32233

BAY DETAILS

Suite	Square Feet	Asking Rate (NNN \$1.70)
Bay #2	1,180	\$8.00 / RSF

Bay #2 is available for lease as shown by the blue shaded area below:



Alex Evans, Broker
Phone: (904) 210-9878
alex@creprojax.com



EVANS COMMERCIAL
PROPERTIES, INC.

10151 Deerwood Park Blvd • Jacksonville, FL 32256

Bldg. 200 Suite 250

Phone : (904) 210-9878 Fax: (888) 405-8106

LEVY ROAD WAREHOUSE

151 LEVY ROAD, ATLANTIC BEACH, FL 32233

AERIAL
MAPS



Alex Evans, Broker
Phone: (904) 210-9878
alex@creprojax.com



EVANS COMMERCIAL
PROPERTIES, INC.

10151 Deerwood Park Blvd • Jacksonville, FL 32256

Bldg. 200 Suite 250

Phone : (904) 210-9878 Fax: (888) 405-8106

The information contained herein was obtained from reliable sources and is believed to be correct. However, all information presented should be verified as it is subject to errors and omissions. Property may be withdrawn from the market at any time without further notice.

Last Updated: April 12, 2018